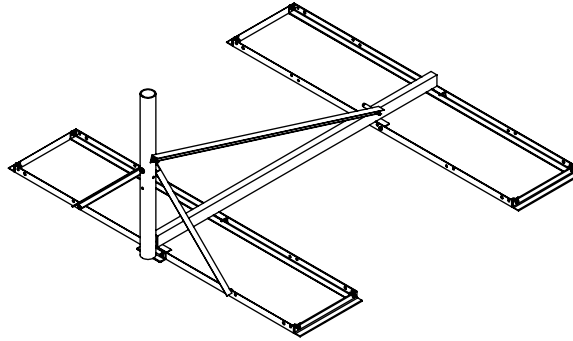
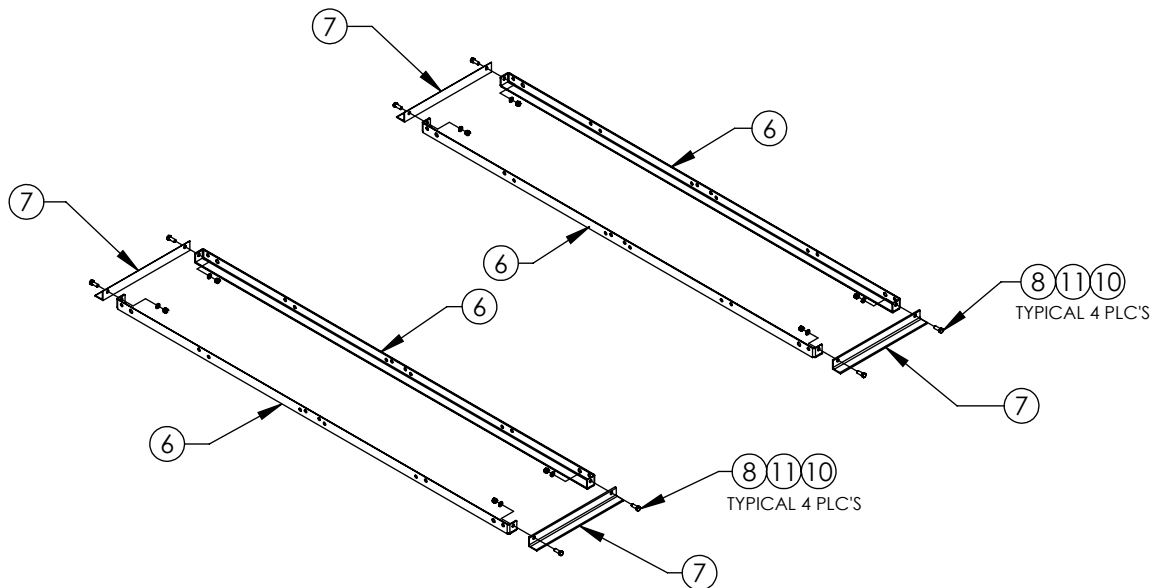


B46 / B46DRB with Pad



PART LIST				
SYM	PART #	DESCRIPTION	B46 QTY.	B46DRB QTY.
1	as required	MAST (O.D. & Length as req'd)	1	1
2	AB1620HD	B4 SUPPORT TUBE ASSY, HDG	1	1
3	AB1621LHHD	B4 LH SIDE BRACE-28.25"L, HDG	1	1
4	AB1621RHHD	B4 RH SIDE BRACE-28.25"L, HDG	1	1
5	AB1622RHHD	B4 RH REAR BRACE-61.25"L, HDG	1	2
6	AB1624HD	6' B4 BALLAST ANGLE, HDG	4	4
7	AB1425HD	16" SIDE PAD, HDG	4	4
		RUBBER PAD 18x48	4	4

HARDWARE KIT P/N: HDWE-B4			
SYM	PART #	DESCRIPTION	QTY.
8	H1-0375-100	3/8" x 1" BOLT GR.5, Z/P	18
9	H1-0375-400TB	3/8" x 4" FULL-THREAD BOLT GR.5, Z/P	3
10	H2-0375HN	3/8" NUT, Z/P	19
11	H4-0375LW	3/8" LOCKWASHER, Z/P	19
12	H3-0375FW	3/8" FLATWASHER, Z/P	2
13	H2-0375WN	3/8" WHIZ-LOCK NUT, Z/P	2



ASSEMBLE THE TWO BALLAST TRAYS (AS SHOWN ABOVE). EACH BALLAST TRAY CONSISTS OF TWO 6' BALLAST ANGLES (#6) AND TWO SIDE PADS (#7). ASSEMBLE EACH TRAY USING FOUR 3/8"x1" BOLTS (#8), NUTS (#10) AND LOCKWASHERS (#11)

PROPRIETARY AND CONFIDENTIAL

THE INFORMATION CONTAINED IN THIS DRAWING IS THE SOLE PROPERTY OF BAIRD SUPPORTING SYSTEMS. ANY REPRODUCTION IN PART OR AS A WHOLE WITHOUT THE WRITTEN PERMISSION OF BAIRD SUPPORTING SYSTEMS IS PROHIBITED.



WWW.BAIRD MOUNTS.COM

UNLESS OTHERWISE SPECIFIED:

DIMENSIONS ARE IN INCHES
TOLERANCES:
FRACTIONAL ±
ANGULAR: MACH ± BEND ±
TWO PLACE DECIMAL ±
THREE PLACE DECIMAL ±

DO NOT SCALE DRAWING

BAIRD MOUNTING SYSTEMS

WATERLOO, IA 50703
PHONE: 319-233-3561
SALES@BAIRDMOUNTS.COM

TITLE:

B46 / B46DRB with Pad Assembly

DRAWN BY
JK

MATERIAL

DWG. PURPOSE
INST

PART. NO.

DWG. NO.
B46(DRB)-000 X 0 -R Assembly Instruction

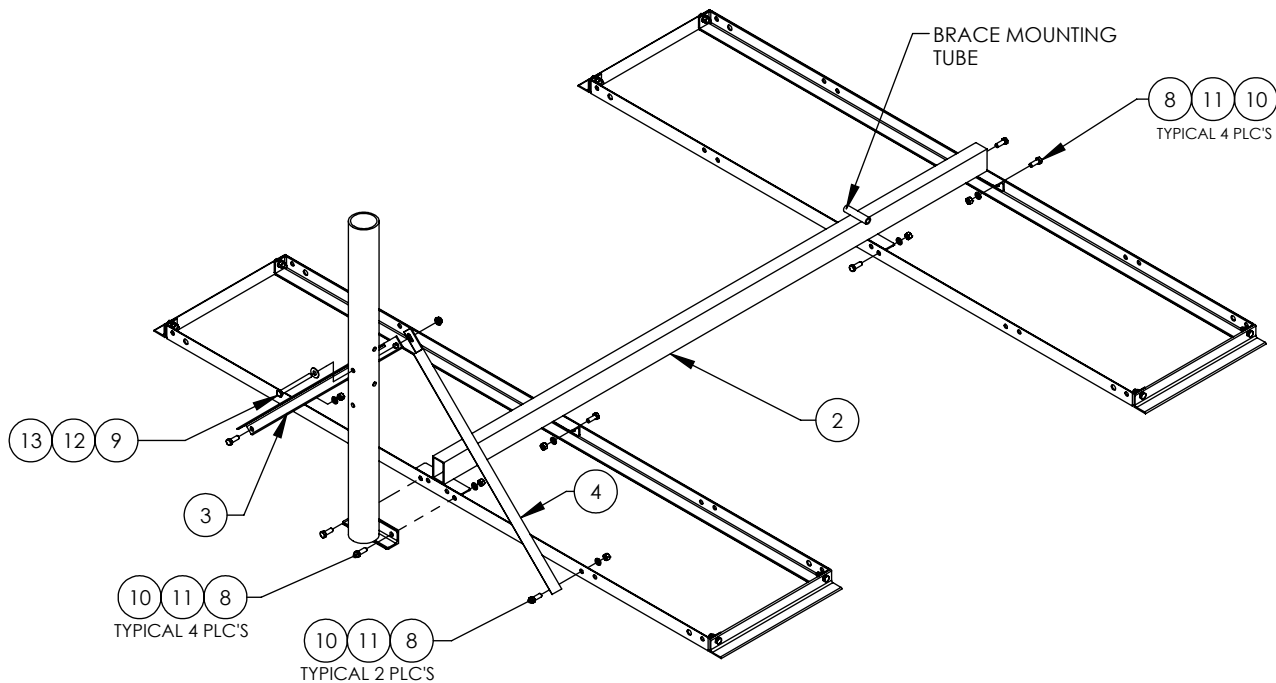
DATE
06/12/20

FINISH

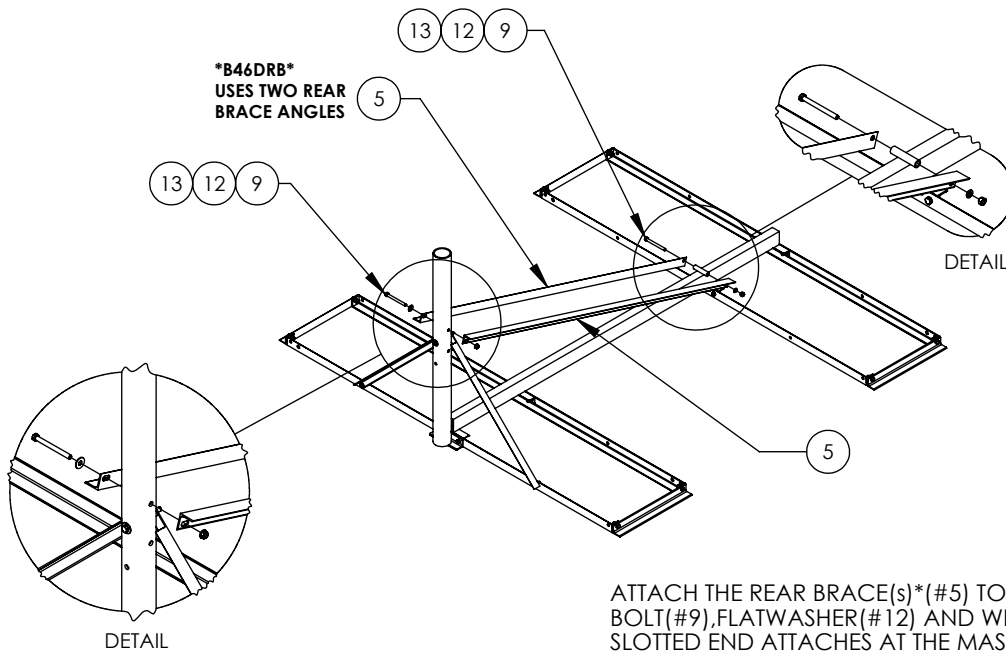
SHEET
1

SCALE
-

REV. 04/24



ATTACH THE SUPPORT TUBE(#2) TO THE BALLAST TRAYS USING EIGHT 3/8"x1" BOLTS(#8), NUTS(#10) AND LOCKWASHERS(#11). THE MAST(#1) ALSO GETS ATTACHED AT THIS STEP. ATTACH THE SIDE BRACES (#3 & #4) TO THE MAST USING A 3/8"x4" TAP BOLT(#9), FLATWASHER(#12) AND WHIZLOCK NUT(#13). NOTE: THE SLOTTED END ATTACHES AT THE MAST. ATTACH THE OTHER END OF EACH SIDE BRACE TO THE BALLAST TRAY USING A 3/8" x 1" BOLT(#8), 3/8" LOCKWASHER (#11) & NUT (#10).



ATTACH THE REAR BRACE(S)*(#5) TO THE MAST USING A 3/8"x4" TAP BOLT(#9), FLATWASHER(#12) AND WHIZLOCK NUT(#13). NOTE: THE SLOTTED END ATTACHES AT THE MAST. ATTACH THE OTHER END OF EACH REAR BRACE TO THE SUPPORT TUBE(#2) USING A 3/8"x4" TAP BOLT(#9), 3/8" LOCKWASHER(#11) & NUT (#10)

***THE B46DRB MOUNT WILL USE TWO REAR BRACES(#5)**

PROPRIETARY AND CONFIDENTIAL

THE INFORMATION CONTAINED IN THIS DRAWING IS THE SOLE PROPERTY OF BAIRD SUPPORTING SYSTEMS. ANY REPRODUCTION IN PART OR AS A WHOLE WITHOUT THE WRITTEN PERMISSION OF BAIRD SUPPORTING SYSTEMS IS PROHIBITED.



WWW.BAIRD MOUNTS.COM

UNLESS OTHERWISE SPECIFIED:

DIMENSIONS ARE IN INCHES
TOLERANCES:
FRACTIONAL ±
ANGULAR: MACH ± BEND ±
TWO PLACE DECIMAL ±
THREE PLACE DECIMAL ±

DO NOT SCALE DRAWING

BAIRD MOUNTING SYSTEMS

WATERLOO, IA 50703
PHONE: 319-233-3561
SALES@BAIRDMOUNTS.COM

TITLE:

B46 / B46DRB with Pad Assembly

DRAWN BY

JK

MATERIAL

-

DWG. PURPOSE

INST

PART. NO.

-

DWG. NO.

B46(DRB)- 000 X 0 -R Assembly Instruction

DATE

06/12/20

FINISH

-

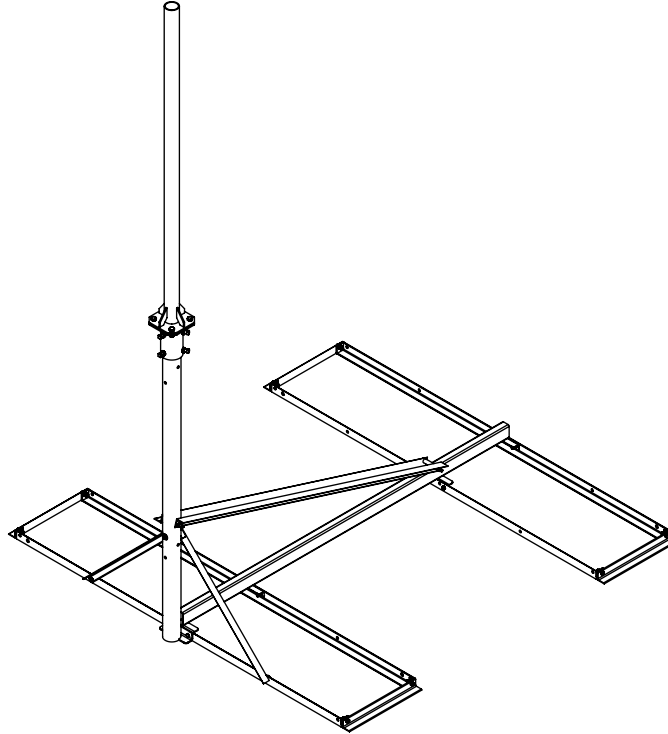
SHEET

2

SCALE

-

B4-6X6DRB-(000)X10 (TWO SECTION MAST)



SYM	PART #	DESCRIPTION	QTY.
1	AB1182-5B46HD	LOWER B4 MAST (2.88"OD x 5')	1
1B	as required	UPPER 6"PLT MAST(O.D. &Length as req'd)	1
2	AB1620HD	B4 SUPPORT TUBE ASSY, HDG	1
3	AB1621LHHD	B4 LH SIDE BRACE-28.25"L, HDG	1
4	AB1621RHHD	B4 RH SIDE BRACE-28.25"L, HDG	1
5	AB1622RHHD	B4 RH REAR BRACE-61.25"L, HDG	2
6	AB1624HD	6' B4 BALLAST ANGLE, HDG	4
7	AB1425HD	16" SIDE PAD, HDG	4
8	H1-0375-100	3/8" x 1" BOLT GR.5, Z/P	18
9	H1-0375-400TB	3/8" x 4" FULL-THREAD BOLT GR.5, Z/P	3
10	H2-0375HN	3/8" NUT, Z/P	19
11	H4-0375LW	3/8" LOCKWASHER, Z/P	19
12	H3-0375FW	3/8" FLATWASHER, Z/P	2
13	H2-0375WN	3/8" WHIZ-LOCK NUT, Z/P	2
14	AB4999X.5(6)6H5HD	2.88" MAST ADAPTER w/6"PLT, HDG	1
15	H5-0500-125SHCPZ	1/2"x 1-1/4" SQ. HD. CUP POINT SETSCREW, Z/P	6
16	H2-0500JN	1/2" JAM NUT, Z/P	6
17	H1-0500-125	1-1/2" x 1-1/4" BOLT GR.5, Z/P	4
18	H2-0500HN	1/2" NUT, Z/P	4
19	H4-0500LW	1/2" LOCKWASHER, Z/P	4
		RUBBER PAD 18x48	4

HDWE-B4

PROPRIETARY AND CONFIDENTIAL

THE INFORMATION CONTAINED IN THIS DRAWING IS THE SOLE PROPERTY OF BAIRD SUPPORTING SYSTEMS. ANY REPRODUCTION IN PART OR AS A WHOLE WITHOUT THE WRITTEN PERMISSION OF BAIRD SUPPORTING SYSTEMS IS PROHIBITED.



WWW.BAIRD MOUNTS.COM

UNLESS OTHERWISE SPECIFIED:

DIMENSIONS ARE IN INCHES
TOLERANCES:
FRACTIONAL ±
ANGULAR: MACH ± BEND ±
TWO PLACE DECIMAL ±
THREE PLACE DECIMAL ±

DO NOT SCALE DRAWING

BAIRD MOUNTING SYSTEMS

WATERLOO, IA 50703
PHONE: 319-233-3561
SALES@BAIRD MOUNTS.COM

TITLE:

B4-6X6 Double Rear Brace, 10' Mast (2 sections),
Rubber Pad

DRAWN BY
JK

MATERIAL
-

DWG. PURPOSE
INST

DATE
10/26/24

FINISH
-

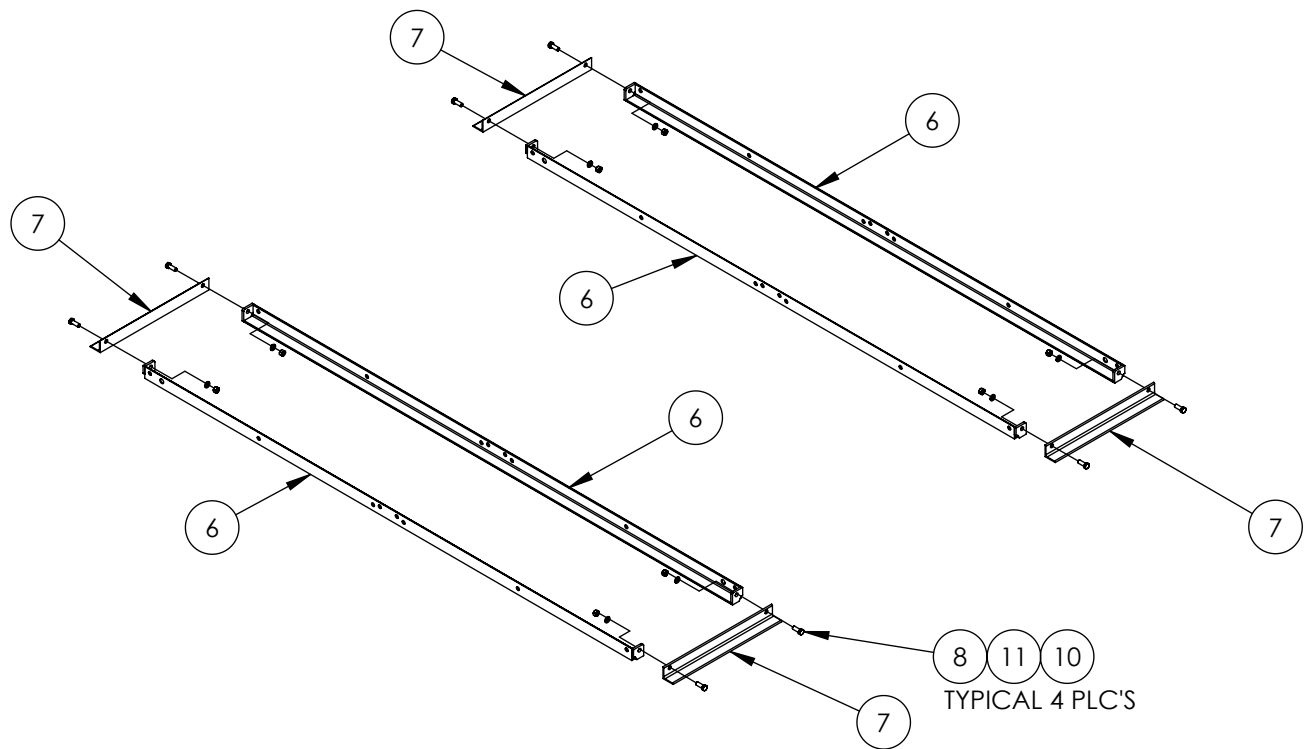
SHEET
1

SCALE
-

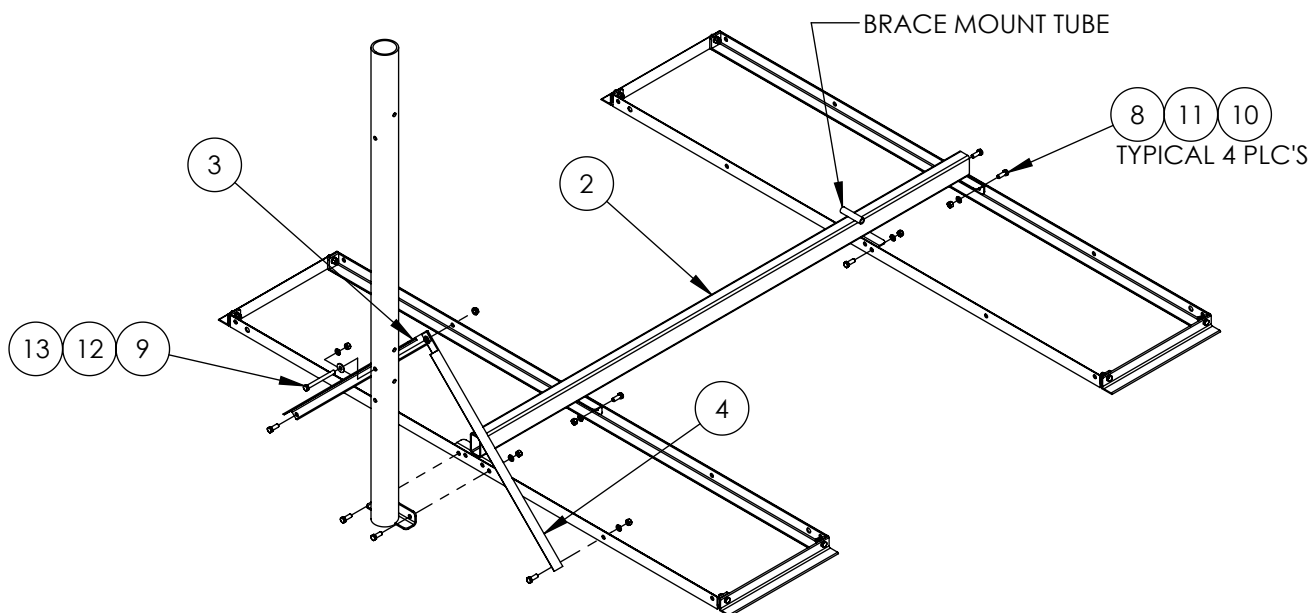
PART. NO.
B46DRB-(000)X10

DWG. NO.
B46DRB-(000)X10 INST

REV: 12/24



ASSEMBLE THE TWO BALLAST TRAYS (AS SHOWN ABOVE). EACH BALLAST TRAY CONSISTS OF TWO 6' BALLAST ANGLES (#6) AND TWO SIDE PADS (#7). ASSEMBLE EACH TRAY USING FOUR 3/8"x1" BOLTS (#8), NUTS (#10) AND LOCKWASHERS (#11)



ATTACH THE SUPPORT TUBE (#2) TO THE BALLAST TRAYS USING EIGHT 3/8"x1" BOLTS (#8), NUTS (#10) AND LOCKWASHERS (#11). THE MAST (#1) ALSO GETS ATTACHED AT THIS STEP. ATTACH THE SIDE BRACES (#3 & #4) TO THE MAST USING A 3/8"x4" TAP BOLT (#9), FLATWASHER (#12) AND WHIZLOCK NUT (#13). NOTE: THE SLOTTED END ATTACHES AT THE MAST. ATTACH THE OTHER END OF EACH SIDE BRACE TO THE BALLAST TRAY USING A 3/8" x 1" BOLT (#8), 3/8" LOCKWASHER (#11) & NUT (#10).

PROPRIETARY AND CONFIDENTIAL

THE INFORMATION CONTAINED IN THIS DRAWING IS THE SOLE PROPERTY OF BAIRD SUPPORTING SYSTEMS. ANY REPRODUCTION IN PART OR AS A WHOLE WITHOUT THE WRITTEN PERMISSION OF BAIRD SUPPORTING SYSTEMS IS PROHIBITED.



WWW.BAIRD MOUNTS.COM

UNLESS OTHERWISE SPECIFIED:

DIMENSIONS ARE IN INCHES
TOLERANCES:
FRACTIONAL ±
ANGULAR: MACH ± BEND ±
TWO PLACE DECIMAL ±
THREE PLACE DECIMAL ±

DO NOT SCALE DRAWING

BAIRD MOUNTING SYSTEMS

WATERLOO, IA 50703
PHONE: 319-233-3561
SALES@BAIRDMOUNTS.COM

TITLE:

B4-6X6 Double Rear Brace, 10' Mast (2 sections),
Rubber Pad

DRAWN BY

JK

MATERIAL

-

DWG. PURPOSE

INST

DATE

10/26/24

FINISH

-

SHEET

2

SCALE

-

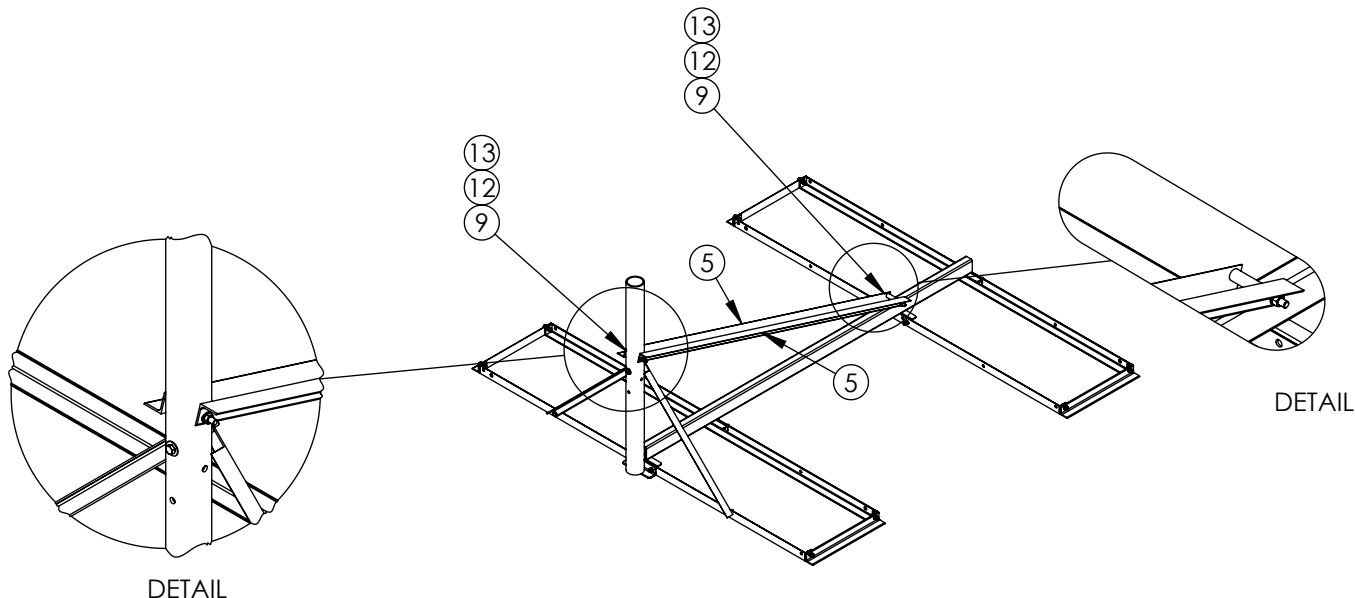
PART. NO.

B46DRB-(000)X10

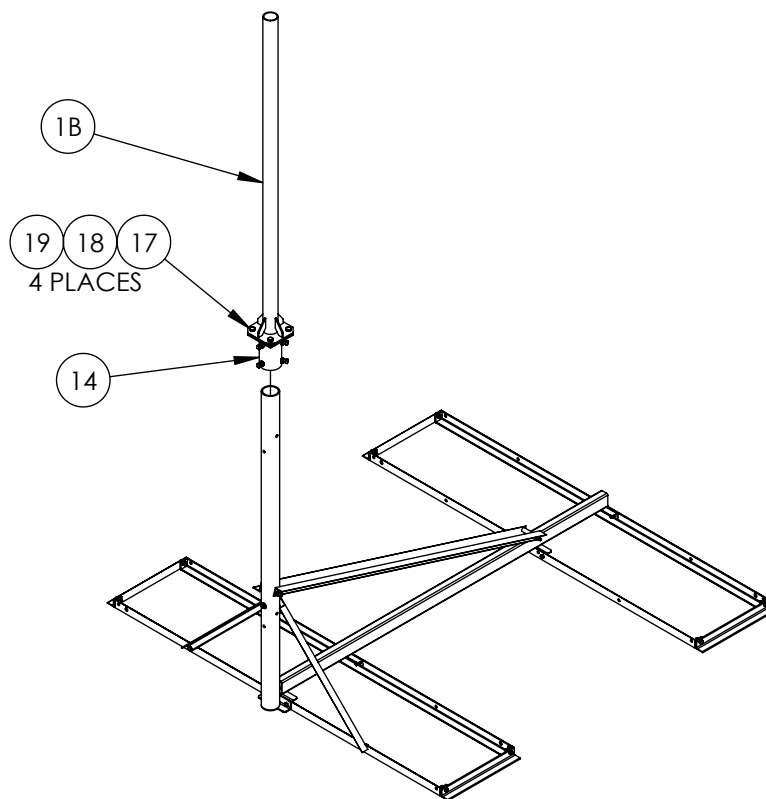
DWG. NO.

B46DRB-(000)X10

REV: 12/24



ATTACH THE REAR BRACE(#5) TO THE MAST USING A 3/8"x4" TAPBOLT(#9) FLATWASHER(#12) AND WHIZLOCK NUT(#13). NOTE: THE SLOTTED END ATTACHES AT THE MAST. ATTACH THE OTHER END OF EACH REAR BRACE TO THE SUPPORT TUBE(#2) USING A 3/8"x4" TAP BOLT(#9), 3/8" LOCKWASHER(#11) & NUT (#10)



PROPRIETARY AND CONFIDENTIAL

THE INFORMATION CONTAINED IN THIS DRAWING IS THE SOLE PROPERTY OF BAIRD SUPPORTING SYSTEMS. ANY REPRODUCTION IN PART OR AS A WHOLE WITHOUT THE WRITTEN PERMISSION OF BAIRD SUPPORTING SYSTEMS IS PROHIBITED.



WWW.BAIRD MOUNTS.COM

UNLESS OTHERWISE SPECIFIED:

DIMENSIONS ARE IN INCHES
TOLERANCES:
FRACTIONAL ±
ANGULAR: MACH ± BEND ±
TWO PLACE DECIMAL ±
THREE PLACE DECIMAL ±

DO NOT SCALE DRAWING

BAIRD MOUNTING SYSTEMS

WATERLOO, IA 50703
PHONE: 319-233-3561
SALES@BAIRDMOUNTS.COM

TITLE:
B4-6X6 Double Rear Brace, 10' Mast (2 sections),
Rubber Pad

DRAWN BY JK		DATE 10/26/24	
MATERIAL -		FINISH -	
DWG. PURPOSE INST		SHEET 3	SCALE -
PART. NO. B46DRB-(000)X10			
DWG. NO. B46DRB-(000)X10			

REV: 12/24