

SYM	PART #	DESCRIPTION	QTY
1	AB1510(9L)HD	B6116 BASE (LEVELER), HDG	1
2	AB1509HD	B6116 BRACE ANGLE, HDG	4
3	AB1508C1HD	B6116 ARM ASSY, HDG	4
4	AB1624HD	6' BALLAST ANGLE 1.5L, HDG	8
5	AB1425HD	16" SIDE PAD 1.5L, HDG	8
6	AB1045-9.8(9LCX2)T8HD	4.50"OD-9.8' MAST w/(2)9" LEVELER PLT, HDG	1
7	AB1182-9.8(9LCX2)T8HD	2.88"OD -9.8' MAST w/(2)9" LEVELER PLT, HDG	1
8	AB1179-9.8(9L)HD	2.37"OD-9.8' MAST w/9"LEVELER PLT, HDG	1
**			
	<b>HARDWARE BOX</b> (contains items 9-22)		**
9	H1-0750-200	3/4"x 2" HEX BOLT GR.5, ZNC	8
10	H4-0750LW	3/4" LOCKWASHER, ZNC	8
11	H2-0750HN	3/4" NUT, ZNC	8
12	H1-0375-100	3/8" x 1" HEX BOLT, ZNC	32
13	H4-0375LW	3/8" LOCKWASHER, ZNC	32
14	H2-0375HN	3/8" NUT, ZNC	32
15	H1-0500-125	1/2" x 1-1/4" HEX BOLT GR.5, ZNC	4
16	H1-0500-225	1/2" x 2-1/4" HEX BOLT GR.5, ZNC	12
17	H4-0500LW	1/2" LOCKWASHER, ZNC	16
18	H2-0500HN	1/2" NUT, ZNC	16
19	H1-0750-500TB	3/4"x5" TAP BOLT GR.8, Z/P	4
20	H2-0750JN	3/4" JAM NUT, Z/P	16
21	H4-0750LW	3/4" SPLITLOCKWASHER, Z/P	4
22	H3-0750FW	3/4" USS FLATWASHER, Z/P	16
		1/8" RUBBER MATTING 18"x48"	8
		PALLET	1

HDWE-MH7  
QTY.2

HDWE-BT  
QTY.2

HDWE-B6  
QTY.1

HDWE-LD  
QTY.1

\*\* items are located in a box

**PROPRIETARY AND CONFIDENTIAL**

THE INFORMATION CONTAINED IN THIS DRAWING IS THE SOLE PROPERTY OF BAIRD SUPPORTING SYSTEMS. ANY REPRODUCTION IN PART OR AS A WHOLE WITHOUT THE WRITTEN PERMISSION OF BAIRD SUPPORTING SYSTEMS IS PROHIBITED.



WWW.BAIRD MOUNTS.COM

UNLESS OTHERWISE SPECIFIED:

DIMENSIONS ARE IN INCHES  
TOLERANCES:  
FRACTIONAL ±  
ANGULAR: MACH ± BEND ±  
TWO PLACE DECIMAL ±  
THREE PLACE DECIMAL ±

DO NOT SCALE DRAWING

**BAIRD MOUNTING SYSTEMS**

WATERLOO, IA 50703  
PHONE: 319-233-3561  
SALES@BAIRDMOUNTS.COM

TITLE:  
B6116, LEVELER, 4.5"ODx9.8' LD MAST,  
2.88"ODx9.8', 2.37"ODx9.8', RUBBER PAD

DRAWN BY  
JK

MATERIAL

DWG. PURPOSE  
INST

DATE  
01/14/21

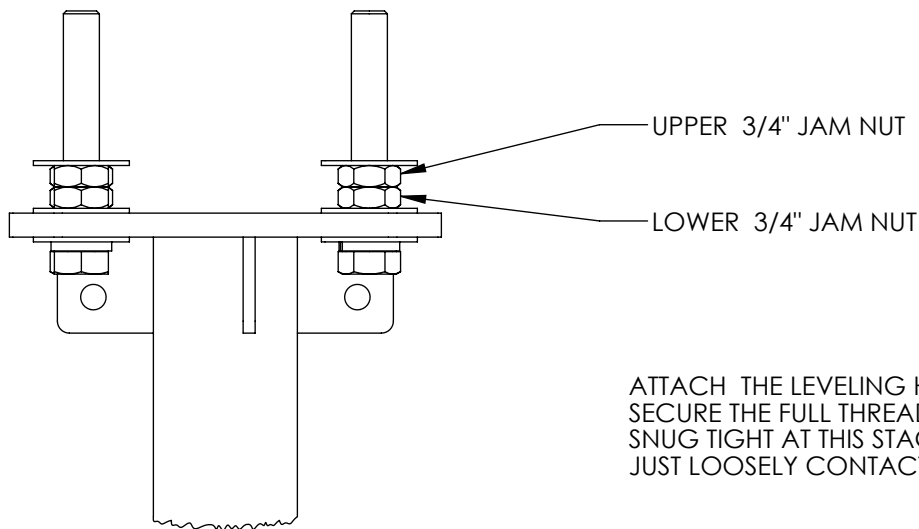
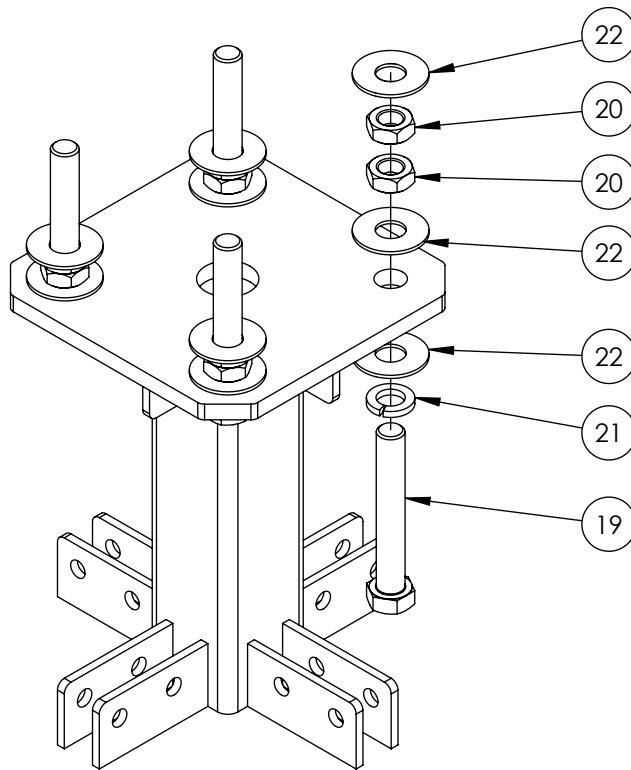
FINISH

SHEET  
1 OF 7

SCALE  
-

PART. NO.  
B6116-30S3-RPL

DWG. NO.  
B6116-30S3-RPL INST



DETAIL "A"

ATTACH THE LEVELING HARDWARE TO THE BASE.  
SECURE THE FULL THREADED BOLT TO THE BASE PLATE,  
SNUG TIGHT AT THIS STAGE. THE SECOND JAM NUT SHOULD  
JUST LOOSELY CONTACT THE LOWER JAM NUT.

**PROPRIETARY AND CONFIDENTIAL**

THE INFORMATION CONTAINED IN THIS DRAWING IS THE SOLE PROPERTY OF BAIRD SUPPORTING SYSTEMS. ANY REPRODUCTION IN PART OR AS A WHOLE WITHOUT THE WRITTEN PERMISSION OF BAIRD SUPPORTING SYSTEMS IS PROHIBITED.



WWW.BAIRD MOUNTS.COM

**UNLESS OTHERWISE SPECIFIED:**

DIMENSIONS ARE IN INCHES  
TOLERANCES:  
FRACTIONAL ±  
ANGULAR: MACH ± BEND ±  
TWO PLACE DECIMAL ±  
THREE PLACE DECIMAL ±

DO NOT SCALE DRAWING

**BAIRD MOUNTING SYSTEMS**

WATERLOO, IA 50703  
PHONE: 319-233-3561  
SALES@BAIRDMOUNTS.COM

**TITLE:**

B6116, LEVELER, 4.5" ODX 9.8' LD MAST,  
2.88" ODX 9.8', 2.37" ODX 9.8', RUBBER PAD

**DRAWN BY**

JK

**MATERIAL**

-

**DWG. PURPOSE**

INST

**DATE**

01/14/21

**FINISH**

-

**SHEET**

2

**SCALE**

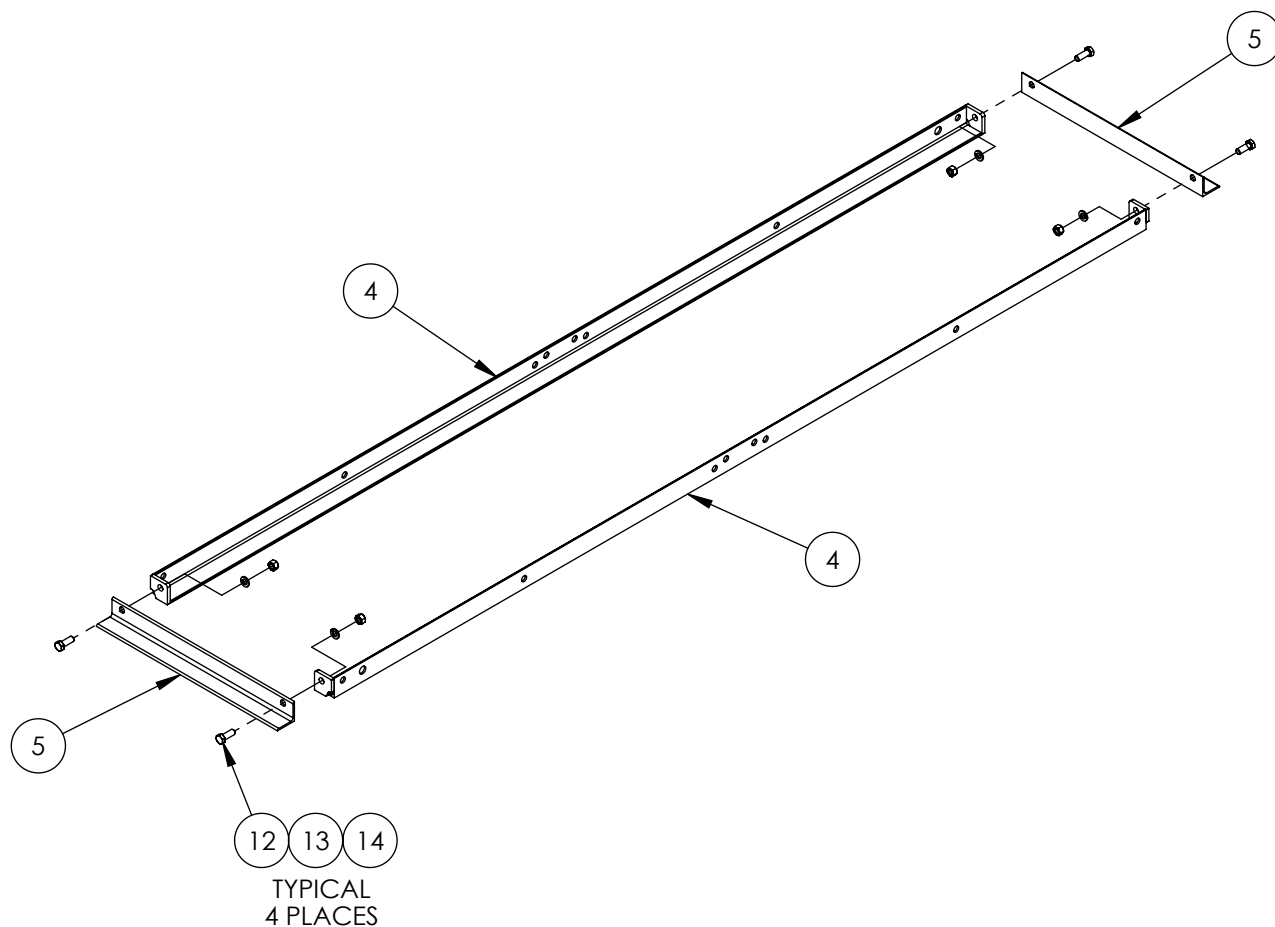
-

**PART. NO.**

B6116-30S3-RPL

**DWG. NO.**

B6116-30S3-RPL INST



ASSEMBLE FOUR SETS OF BALLAST TRAYS AS SHOWN IN THE ABOVE DRAWING.  
 SNUG TIGHT BOLTS UNTIL MOUNT IS FULLY ASSEMBLED, THEN FULLY TIGHTEN  
 HARDWARE.

**PROPRIETARY AND CONFIDENTIAL**

THE INFORMATION CONTAINED IN THIS DRAWING IS THE SOLE PROPERTY OF  
 BAIRD SUPPORTING SYSTEMS. ANY REPRODUCTION IN PART OR AS A WHOLE  
 WITHOUT THE WRITTEN PERMISSION OF BAIRD SUPPORTING SYSTEMS IS  
 PROHIBITED.



WWW.BAIRD MOUNTS.COM

**UNLESS OTHERWISE SPECIFIED:**

DIMENSIONS ARE IN INCHES  
 TOLERANCES:  
 FRACTIONAL ±  
 ANGULAR: MACH ± BEND ±  
 TWO PLACE DECIMAL ±  
 THREE PLACE DECIMAL ±

DO NOT SCALE DRAWING

**BAIRD MOUNTING SYSTEMS**

WATERLOO, IA 50703  
 PHONE: 319-233-3561  
 SALES@BAIRDMOUNTS.COM

**TITLE:**

B6116, LEVELER, 4.5"ODX9.8' LD MAST,  
 2.88"ODx9.8', 2.37"ODx9.8', RUBBER PAD

**DRAWN BY**

JK

**MATERIAL**

-

**DWG. PURPOSE**

INST

**DATE**

01/14/21

**FINISH**

-

**SHEET**

3

**SCALE**

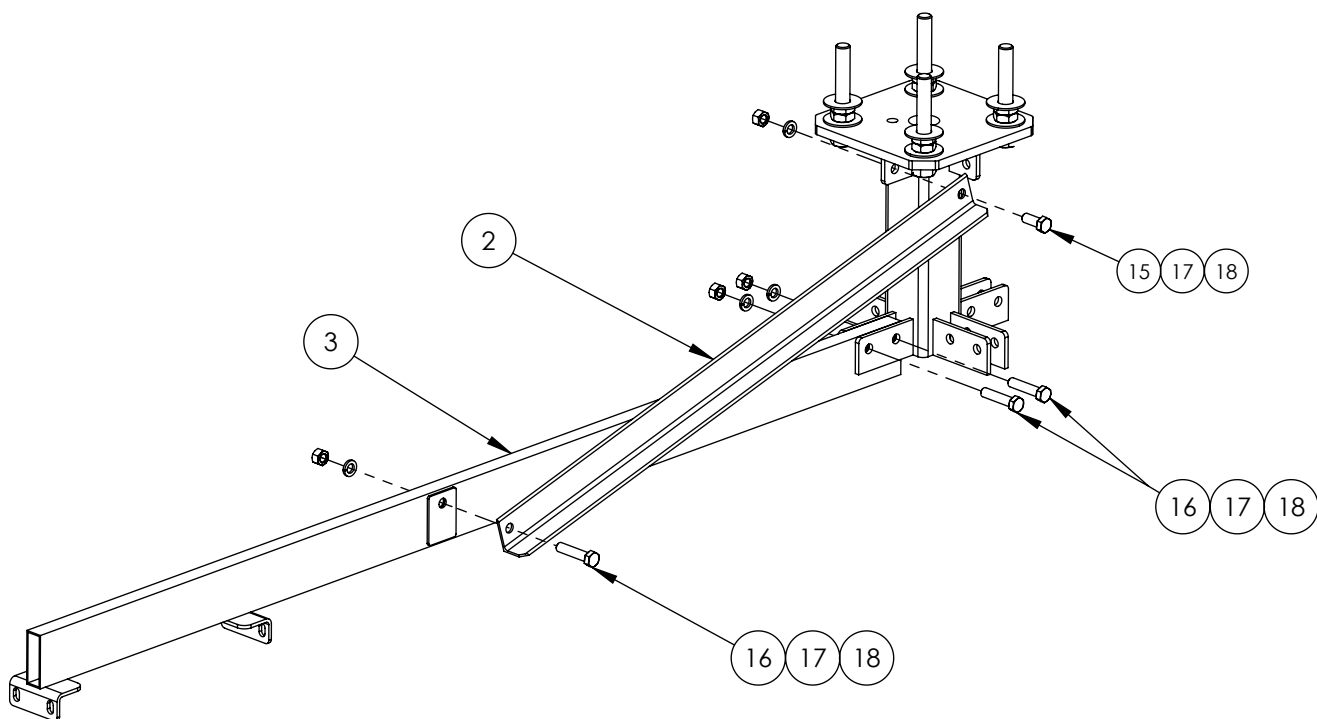
-

**PART. NO.**

B6116-30S3-RPL

**DWG. NO.**

B6116-30S3-RPL INST



ATTACH THE ARM TO THE BASE WITH (2) 1/2"x2-1/4" BOLTS, LW & NUTS. NEXT, CONNECT THE BRACE ANGLE TO THE UPPER TAB ON THE BASE USING A 1/2"x1-1/4" BOLT, LW & NUT. THE OTHER END OF THE BRACE IS BOLTED TO THE ARM WITH A 1/2"x2-1/4" BOLT, LW & NUT.

REPEAT THE STEPS FOR THE REMAINING THREE SIDES OF THE BASE.

**PROPRIETARY AND CONFIDENTIAL**

THE INFORMATION CONTAINED IN THIS DRAWING IS THE SOLE PROPERTY OF BAIRD SUPPORTING SYSTEMS. ANY REPRODUCTION IN PART OR AS A WHOLE WITHOUT THE WRITTEN PERMISSION OF BAIRD SUPPORTING SYSTEMS IS PROHIBITED.



WWW.BAIRD MOUNTS.COM

**UNLESS OTHERWISE SPECIFIED:**

DIMENSIONS ARE IN INCHES  
TOLERANCES:  
FRACTIONAL ±  
ANGULAR: MACH ± BEND ±  
TWO PLACE DECIMAL ±  
THREE PLACE DECIMAL ±

DO NOT SCALE DRAWING

**BAIRD MOUNTING SYSTEMS**

WATERLOO, IA 50703  
PHONE: 319-233-3561  
SALES@BAIRDMOUNTS.COM

**TITLE:**

B6116, LEVELER, 4.5" ODX9.8' LD MAST,  
2.88" ODX9.8', 2.37" ODX9.8', RUBBER PAD

**DRAWN BY**

JK

**MATERIAL**

-

**DWG. PURPOSE**

INST

**DATE**

01/14/21

**FINISH**

-

**SHEET**

4

**SCALE**

-

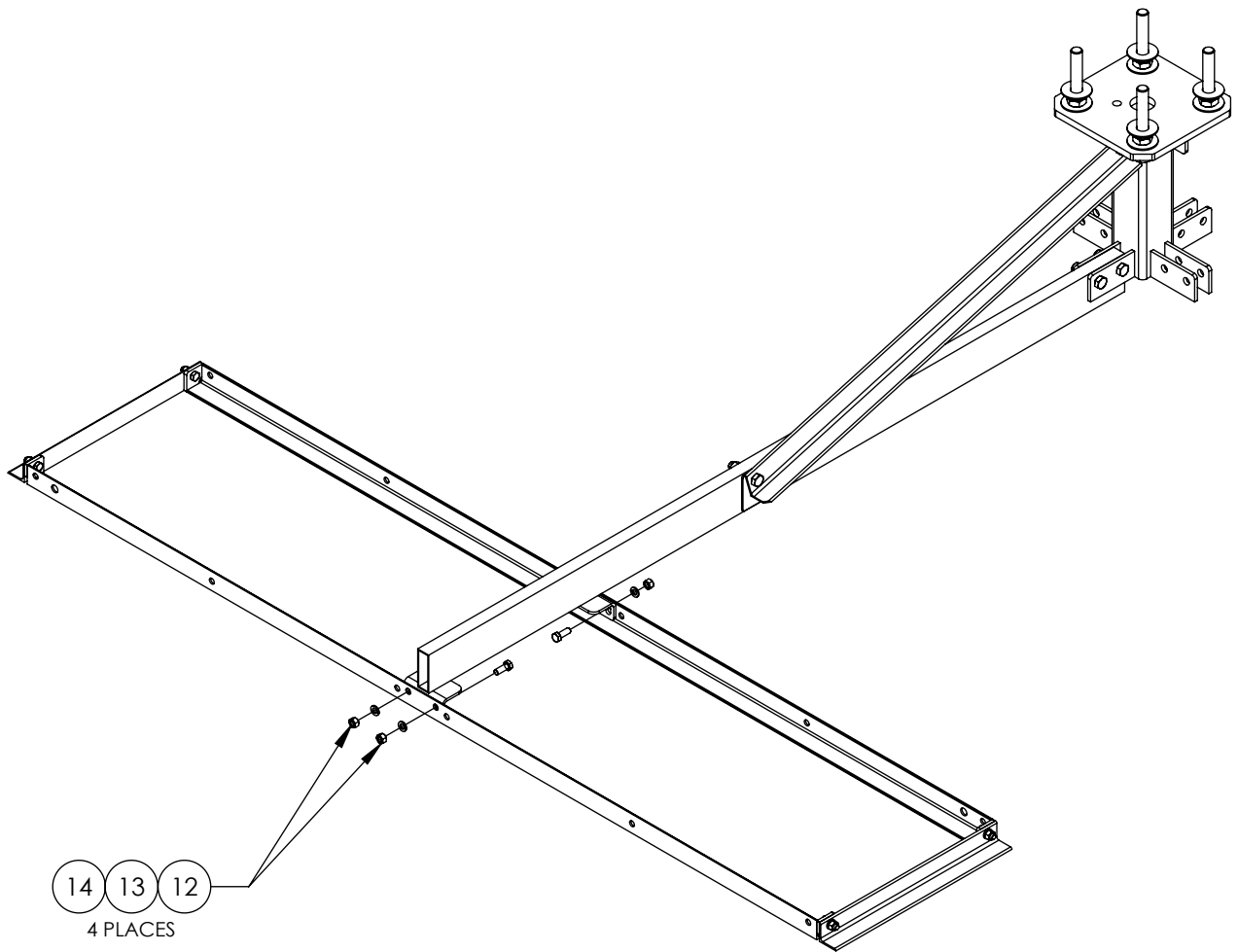
**PART. NO.**

B6116-30S3-RPL

**DWG. NO.**

B6116-30S3-RPL INST

REV. 01/2025



ATTACH THE PREVIOUSLY ASSEMBLED BALLAST TRAYS TO EACH LEG (SEE DIAGRAM ABOVE). THE ARM TABS SIT INSIDE THE BALLAST TRAY AND ARE ATTACHED WITH FOUR 3/8"x1" BOLTS, LOCKWASHERS AND NUTS.

REPEAT THE STEP FOR THE THREE REMAINING ARMS.

**PROPRIETARY AND CONFIDENTIAL**

THE INFORMATION CONTAINED IN THIS DRAWING IS THE SOLE PROPERTY OF BAIRD SUPPORTING SYSTEMS. ANY REPRODUCTION IN PART OR AS A WHOLE WITHOUT THE WRITTEN PERMISSION OF BAIRD SUPPORTING SYSTEMS IS PROHIBITED.



WWW.BAIRD MOUNTS.COM

**UNLESS OTHERWISE SPECIFIED:**

DIMENSIONS ARE IN INCHES  
TOLERANCES:  
FRACTIONAL ±  
ANGULAR: MACH ± BEND ±  
TWO PLACE DECIMAL ±  
THREE PLACE DECIMAL ±

DO NOT SCALE DRAWING

**BAIRD MOUNTING SYSTEMS**

WATERLOO, IA 50703  
PHONE: 319-233-3561  
SALES@BAIRDMOUNTS.COM

**TITLE:**

B6116, LEVELER, 4.5"ODX9.8' LD MAST,  
2.88"ODx9.8', 2.37"ODx9.8', RUBBER PAD

**DRAWN BY**

JK

**MATERIAL**

-

**DWG. PURPOSE**

INST

**DATE**

01/14/21

**FINISH**

-

**SHEET**

5

**SCALE**

-

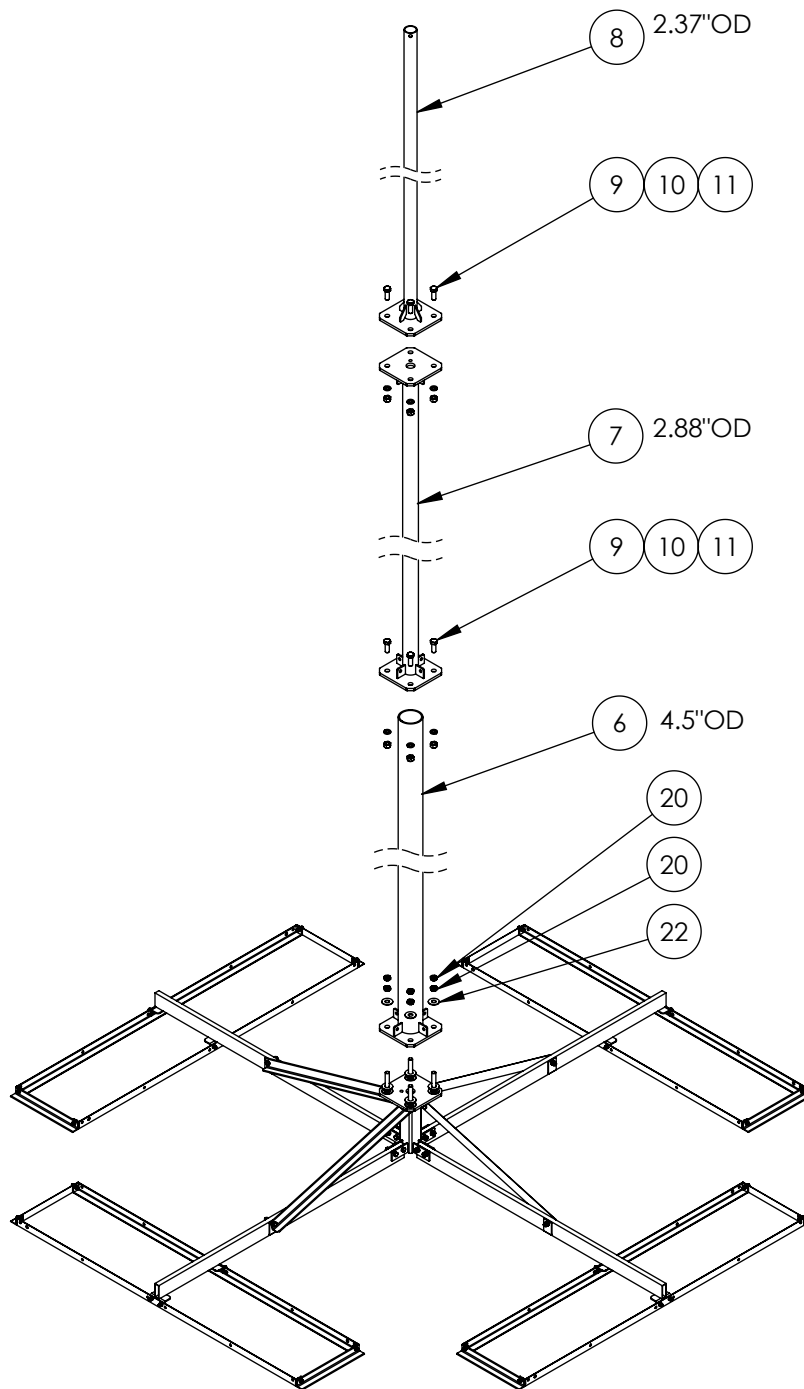
**PART. NO.**

B6116-30S3-RPL

**DWG. NO.**

B6116-30S3-RPL INST

REV. 01/2025



**PROPRIETARY AND CONFIDENTIAL**

THE INFORMATION CONTAINED IN THIS DRAWING IS THE SOLE PROPERTY OF BAIRD SUPPORTING SYSTEMS. ANY REPRODUCTION IN PART OR AS A WHOLE WITHOUT THE WRITTEN PERMISSION OF BAIRD SUPPORTING SYSTEMS IS PROHIBITED.



WWW.BAIRD MOUNTS.COM

**UNLESS OTHERWISE SPECIFIED:**

DIMENSIONS ARE IN INCHES  
TOLERANCES:  
FRACTIONAL  $\pm$   
ANGULAR: MACH  $\pm$  BEND  $\pm$   
TWO PLACE DECIMAL  $\pm$   
THREE PLACE DECIMAL  $\pm$

DO NOT SCALE DRAWING

**BAIRD MOUNTING SYSTEMS**

WATERLOO, IA 50703  
PHONE: 319-233-3561  
SALES@BAIRDMOUNTS.COM

**TITLE:**

B6116, LEVELER, 4.5" ODX 9.8' LD MAST,  
2.88" ODX 9.8', 2.37" ODX 9.8', RUBBER PAD

**DRAWN BY**

JK

**MATERIAL**

-

**DWG. PURPOSE**

INST

**DATE**

01/14/21

**FINISH**

-

**SHEET**

6

**SCALE**

-

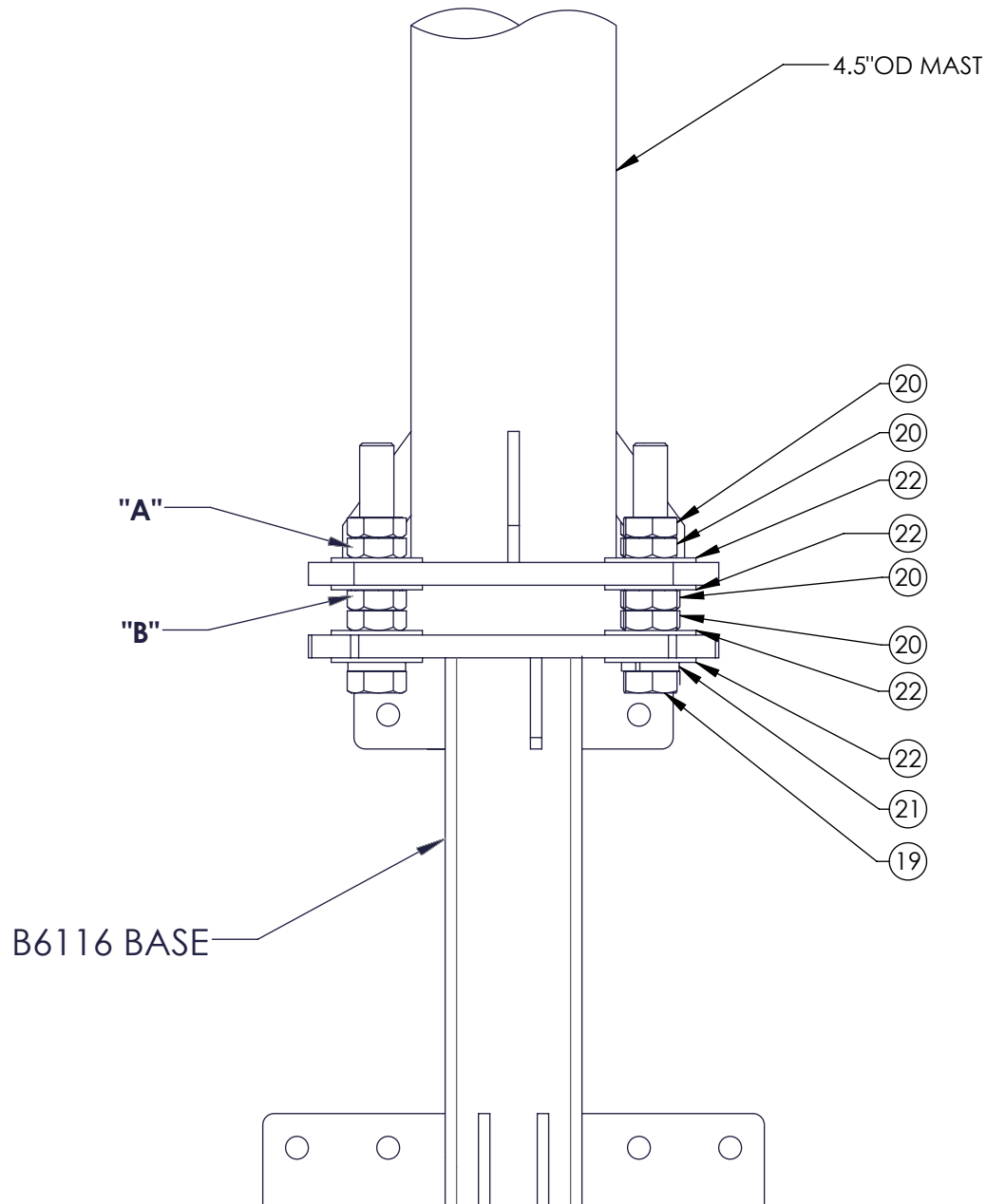
**PART. NO.**

B6116-30S3-RPL

**DWG. NO.**

B6116-30S3-RPL INST

REV. 01/2025



**LEVELING DEVICE DETAIL**  
 TO ADJUST THE MAST FOR PLUMB  
 LOOSEN THE NUTS AT POSITION "A"  
 USE THE NUTS AT POSITION "B" TO MAKE THE ADJUSTMENTS  
 TIGHTEN THE POSITION "A" NUTS TO LOCKDOWN THE MAST

**PROPRIETARY AND CONFIDENTIAL**

THE INFORMATION CONTAINED IN THIS DRAWING IS THE SOLE PROPERTY OF BAIRD SUPPORTING SYSTEMS. ANY REPRODUCTION IN PART OR AS A WHOLE WITHOUT THE WRITTEN PERMISSION OF BAIRD SUPPORTING SYSTEMS IS PROHIBITED.



WWW.BAIRD MOUNTS.COM

**UNLESS OTHERWISE SPECIFIED:**

DIMENSIONS ARE IN INCHES  
 TOLERANCES:  
 FRACTIONAL ±  
 ANGULAR: MACH ± BEND ±  
 TWO PLACE DECIMAL ±  
 THREE PLACE DECIMAL ±

DO NOT SCALE DRAWING

**BAIRD MOUNTING SYSTEMS**

WATERLOO, IA 50703  
 PHONE: 319-233-3561  
 SALES@BAIRDMOUNTS.COM

**TITLE:**

B6116, LEVELER, 4.5"ODx9.8' LD MAST,  
 2.88"ODx9.8', 2.37"ODx9.8', RUBBER PAD

**DRAWN BY**

JK

**MATERIAL**

-

**DWG. PURPOSE**

INST

**DATE**

01/14/21

**FINISH**

-

**SHEET**

7

**SCALE**

-

**PART. NO.**

B6116-30S3-RPL

**DWG. NO.**

B6116-30S3-RPL INST